

## DATASHEET

### Business Benefits

- Identifies hard to find configuration and network health issues
- Automates repetitive, manual tasks
- Safely provides operations teams controlled network access as needed to perform their jobs
- Evaluates change and network health in the context of deployed topologies
- Enforces standardization and regulatory policy compliance
- Focuses staff on the most business impacting issues
- Audits and verifies compliance with build-in expertise for mandates including ITIL, ISO, PCI, STIG, IAVA, DISA, HIPAA, SOX, and GLBA
- Supports complex, multi-vendor networks out of the box
- Scales to meet current and future requirements with enhanced architectural design including multi-tenant and multi-network management from a single console
- Enhances Infoblox functionality with IPAM and NetMRI integration

### Reduce Risk and Improve Its Efficiency by Automating Network Configuration and Change Management

NetMRI enables organizations to take control of network configurations and changes—making it easy to identify hard-to-find configuration problems and meet compliance requirements. Instead of just logging changes, NetMRI utilizes built-in subject matter expertise to audit, analyze, and automate network change.

With in-depth, out-of-the-box expert analytics, NetMRI isolates health and configuration issues before they cause major problems. Minor configuration anomalies may only cause slight performance problems today, but could cripple the network tomorrow. The built-in intelligence and remediation options are unique to NetMRI and allow your IT staff to focus on business impacting issues and to spend less time fire fighting and doing manual, repetitive processes.

NetMRI is quick to deploy and automatically applies its embedded analysis without customization. Built to scale for complex networks, the system learns your network, gathers key data, applies the built-in expertise, and generates a network health score and list of actionable issues to improve quality—all out of the box.

### Understand Impact of Change

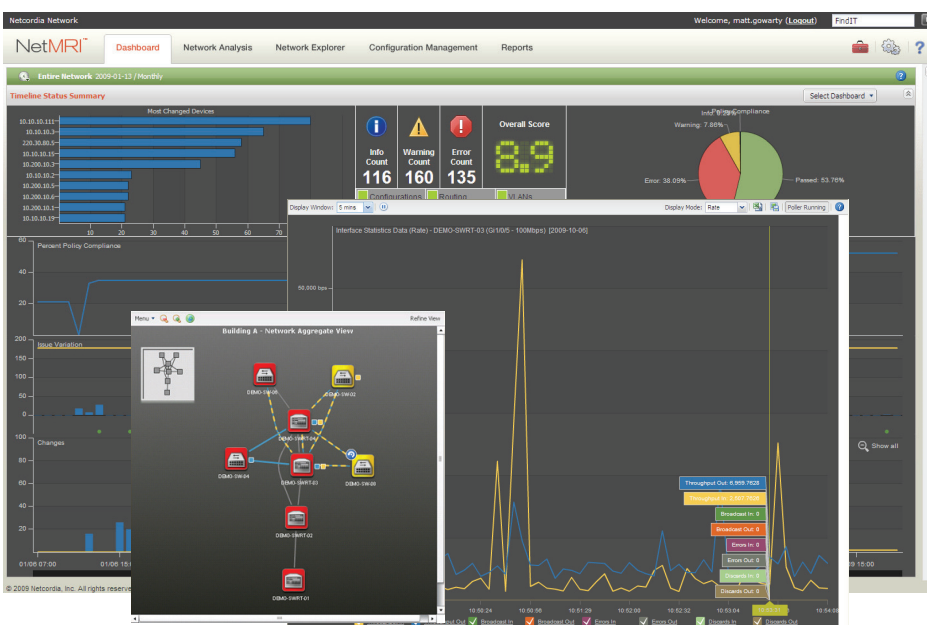
NetMRI brings together the information needed for network engineering and operations teams to understand the cause and effect relationships between network configuration and change and their impact on network health, performance, and compliance.

Further, NetMRI constantly monitors for change, alerting operators immediately to what changed, where, and by whom. When change happens, NetMRI assesses the resulting configurations to proactively identify inconsistent or incorrect settings, and facilitates remediation.

### Build Standards—Meet Compliance

Standardization of network device configurations builds consistency, thus improving reliability, reducing the risk of configuration errors impacting overall health and easing maintenance costs over time.

NetMRI enables users to leverage pre-built rules and policies to define standards across network devices. The monitoring automatically notifies you when a change causes a policy violation, so the IT staff can get the device back into compliance quickly. Enhanced form-based wizards, rules, policies, and notifications allow users to meet custom requirements, without the need for complex scripting.



### DATASHEET

#### Key Features

---

- Built-in expert analysis for configuration and health assessments
  - Automatic network discovery
  - Multi-perspective topology views
  - Summary dashboards that correlate change with network health and compliance
  - Standard and custom rule definitions for increased analysis
  - Change monitoring and auditing of who, where, when, and what
  - Issue and policy auto-remediation with automatic triggered job creation
  - Easily build and enforce standards and report violations
  - Job scheduling, approval, and peer-review enforcement
  - Packaged scripts for managing the network, such as OS upgrades and password changes
  - Integrates NetMRI discovery and Layer 3 route information by synching with Infoblox IPAM
- 

#### Improve Staff Productivity

As IT organizations are asked to do more with less, NetMRI uses automation and embedded expertise to improve staff productivity by reducing the amount of manual data collection and analysis of network information. NetMRI quickly identifies and prioritizes problems that are impractical for most organizations to proactively detect. Associating change information means operations teams no longer need to manually search high and low to find the changes that might have caused the problems.

#### What Sets NetMRI Apart

---

##### Built-in Expertise and Analysis

A key driver to the success of NetMRI deployments is its built-in expertise and analysis based on networking industry best practices. This analysis enables NetMRI to not only track changes but also identify deep-rooted issues that threaten network health and stability.

##### Understand Relationships between Devices

As networks become more complex, the need to understand how a change on one device can negatively impact its network neighbors becomes critical. NetMRI analyzes data and configurations from devices, not as stand-alone entities, but as members of a community and in the context of their neighbors. NetMRI's topology views illustrate the multi-dimensional relationships of network devices, overlaying the status of change, network health, and policy compliance, making it easy to see how changes on one device could impact other aspects of the network.

##### Time to Value

NetMRI typically installs in less than 30 minutes, and delivers in-depth network and configuration information within hours. With a new architecture and physical and virtual appliance deployments, NetMRI scales to handle the most diverse and complex networks while simplifying implementation.

##### Enhance IT Expertise

NetMRI enhances efficiency for experienced engineers by minimizing manual, repetitive tasks and allows them to focus on key business tasks and policies. For less experienced IT staff, the built-in expertise and remediation tools increase their knowledge, empowering them with expert techniques and information to identify hard to find problems and to implement changes efficiently and correctly.

##### Detect and Control Change

With the user-based role definitions, IT organizations can provide multiple access levels based on needs or level of experience. This flexibility eliminates the need to assign admin rights to everyone, while still empowering them with the access they need to perform task like changing device passwords or gathering more information.

#### Infoblox Product Warranty and Services

The standard hardware warranty is for a period of one year. The system software has a 90-day warranty that will meet published specifications. Optional service products are also available that extend the hardware and software warranty. These products are recommended to ensure the appliance is kept updated with the latest software enhancements and to ensure the security and availability of the system. Professional services and training courses are also available from Infoblox. Information in this document is subject to change without notice. Infoblox Inc. assumes no responsibility for errors that appear in this document.